

## AGENDA

**Meeting:** CALNE AREA BOARD  
**Place:** Lansdowne Hall, Derry Hill, Petty Lane, Calne SN11 9QY  
**Date:** Tuesday 10 April 2012  
**Time:** 7.00 pm

---

Including the Parishes of Calne Without, Bremhill, Hilmarton, Heddington, Cherhill, Compton Bassett and Calne.

---

**The area board welcomes and invites contributions from members of the public. The Chairman will try to ensure that everyone who wishes to speak will have the opportunity to do so.**

If you have any requirements that would make your attendance at the meeting easier, please contact your Democratic Services Officer.

**Refreshments and networking opportunities will be available from 6.30 pm.**

---

Please direct any enquiries on this agenda to Alexa Smith (Democratic Services Officer), on 01249 706610 or [alexa.smith@wiltshire.gov.uk](mailto:alexa.smith@wiltshire.gov.uk)

or Jane Vaughan (Calne Community Area Manager), on 01247 721447 or [jane.vaughan@wiltshire.gov.uk](mailto:jane.vaughan@wiltshire.gov.uk)

The papers connected with this meeting are available on the Council's website at [www.wiltshire.gov.uk](http://www.wiltshire.gov.uk)

Press enquiries to Communications on direct lines 01225 713114 / 713115.

---

### Wiltshire Councillors

Cllr Alan Hill, Calne South and Cherhill  
Cllr Christine Crisp, Calne Rural (Chairman)  
Cllr Chuck Berry, Calne North

Cllr Howard Marshall, Calne Central  
Cllr Anthony Trotman, Calne Chilvester  
and Abberd (Vice Chairman)

Items to be considered	Time
<p>1. <b>Chairman's Welcome and Introductions</b> (<i>Pages 1 - 2</i>)</p> <p>The Chairman will welcome Councillor Lionel Grundy OBE, Cabinet member for Children's Services.</p>	7.00 pm
<p>2. <b>Apologies for Absence</b></p>	
<p>3. <b>Minutes</b> (<i>Pages 3 - 12</i>)</p> <p>To approve and sign as a correct record the minutes of the meeting held on 14 February 2012.</p>	
<p>4. <b>Declarations of Interest</b></p> <p>Councillors are requested to declare any personal or prejudicial interests or dispensations granted by the Standards Committee.</p>	
<p>5. <b>Chairman's Announcements</b> (<i>Pages 13 - 26</i>)</p> <p>The Chairman will provide information about:</p> <ul style="list-style-type: none"> <li>• The review of mini recycling sites and household recycling centre summer opening hours (attached)</li> <li>• Polling station review (attached)</li> <li>• Help to live at home (attached)</li> <li>• Volunteers update (attached).</li> </ul>	7.10 pm
<p>6. <b>Partner Updates</b> (<i>Pages 27 - 36</i>)</p> <p>To receive an update from the partners listed below:</p> <ol style="list-style-type: none"> <li>a. Wiltshire Police (attached)</li> <li>b. Wiltshire Fire and Rescue Service – to include information on the Integrated Risk Management Plan for 2012-15 (attached)</li> <li>c. NHS Wiltshire (attached)</li> <li>d. Calne Community Area Partnership</li> <li>e. Calne CAYPIG (Community Area Young People's Issues Group)</li> <li>f. Town and Parish Councils.</li> </ol>	7.20 pm

7.	<p><b>Feedback/Future Work from the Community Planning Event</b></p> <p>Trevor Jenkins, Chairman of Calne Community Area Partnership, will present feedback/future work identified from the recent community planning event. This will be followed by a short question and answer session.</p>	7.35 pm
8.	<p><b>Air Quality Action Plan for Wiltshire</b> (<i>Pages 37 - 40</i>)</p> <p>Mandy Bradley, Service Director, will invite the community to come up with local actions that they would like to implement to improve air quality. This will be followed by a short question and answer session.</p>	7.45 pm
9.	<p><b>Your Local Issues</b></p> <p>Councillors will provide an update on community issues and progress on area board working groups. This will include:</p> <ul style="list-style-type: none"> <li>a. Skate board park working group</li> <li>b. (CATG) Highways working group – Councillor Christine Crisp</li> <li>c. Calne campus working group – Councillor Alan Hill</li> <li>d. Sandpits Lane (section 106) working group – Councillor Tony Trotman.</li> </ul>	8.15 pm
10.	<p><b>Area Board Funding</b> (<i>Pages 41 - 46</i>)</p> <p>To consider one application to the Community Area Grants Scheme and one area board initiative, as follows:</p> <ul style="list-style-type: none"> <li>• Calne Extended Schools Partnership – seeking £3,000 towards ‘Calne Games’, a range of events that will involve and encourage wider participation in Olympic and Paralympic values and will be open to all children who go to primary school in the Calne community area.</li> <li>• Wiltshire Diamond Jubilee Event – an area board initiative seeking £800 towards providing a presence for the Calne community area at the Salisbury Diamond Jubilee event.</li> </ul>	8.30 pm
11.	<p><b>Cabinet Representative</b></p> <p>Councillor Lionel Grundy OBE will give a short overview of his role as Cabinet member for Children’s Services.</p>	8.40 pm
12.	<p><b>Close</b></p> <p>The Chairman will set out arrangements for the next meeting.</p>	8.50 pm

**Future Meeting Dates**

Tuesday, 12 June 2012

7.00 pm

Beversbrook Sports Facility

Tuesday 14 August

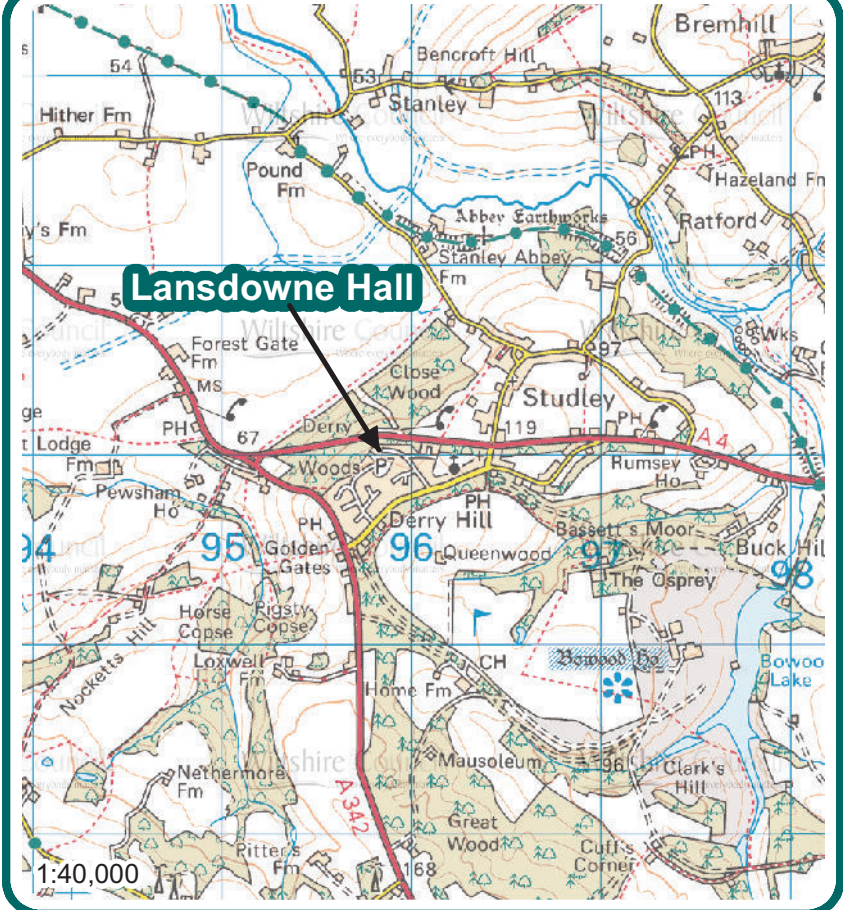
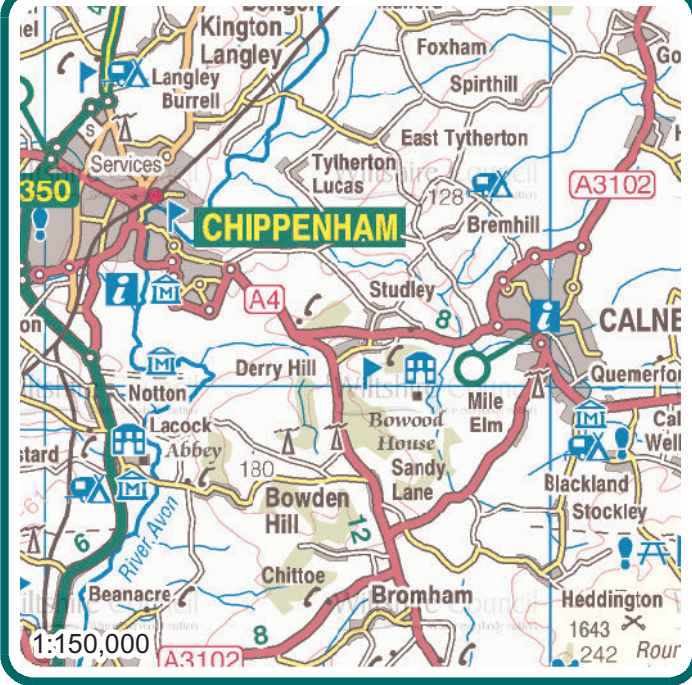
7.00 pm

Compton Bassett Village Hall

Tuesday 16 October

7.00 pm

John Bentley School



**Lansdowne Hall**  
**Petty Lane**  
**Derry Hill**  
**Calne**  
**SN11 9QY**


  
 Where everybody matters







# MINUTES

**Meeting:** CALNE AREA BOARD  
**Place:** Calne Town Hall, Bank House, The Strand, Calne, Wiltshire, SN11  
0EN  
**Date:** 14 February 2012  
**Start Time:** 7.00 pm  
**Finish Time:** 9.05 pm

---

Please direct any enquiries on these minutes to:

Alexa Smith (Democratic Services Officer), on 01249 706610 or [alexa.smith@wiltshire.gov.uk](mailto:alexa.smith@wiltshire.gov.uk)

Papers available on the Council's website at [www.wiltshire.gov.uk](http://www.wiltshire.gov.uk)

---

## **In Attendance:**

### **Wiltshire Councillors**

Cllr Alan Hill, Cllr Christine Crisp (Chairman), Cllr Howard Marshall and  
Cllr Anthony Trotman (Vice Chairman)

### **Wiltshire Council Officers**

Brad Fleet (Service Director), Will Kay (Youth Development Coordinator), Alexa Smith  
(Democratic Services Officer) and Jane Vaughan (Community Area Manager)

### **Town and Parish Councillors**

Calne Town Council – Mercy Baggs, Charles Boase, Roy Golding\*, Caroline Ramsey  
and Greg Widger

Calne Without Parish Council – Richard Aylen and Ed Jones\*

Cherhill Parish Council – David Evans\*

\* = nominated representative

### **Partners**

Wiltshire Police – Sergeant Allan George

Calne Area Transport – Yvonne Gray and Anne Henshaw

Calne Community Area Partnership – Trevor Jenkins

Friends of Abberd Brook - Francis Bosworth and Frank Rumble

**Total in attendance: 45**

---



<u>Agenda Item No.</u>	<u>Summary of Issues Discussed and Decision</u>
1.	<p><u>Chairman's Welcome and Introductions</u></p> <p>The Chairman welcomed everyone to Calne Town Hall and introduced the councillors and officers present.</p>
2.	<p><u>Apologies for Absence</u></p> <p>Apologies were received from Councillor Berry, Sergeant Phil Connor, Geoff Dickerson (Heddington Parish Council), Mike Franklin (Wiltshire Fire and Rescue Service), Inspector Martin Schorah (Wiltshire Police) and Councillor Tonge.</p>
3.	<p><u>Minutes</u></p> <p>The minutes of the meeting held on 6 December were approved and signed as a correct record.</p>
4.	<p><u>Declarations of Interest</u></p> <p>There were no declarations of interest.</p>
5.	<p><u>Chairman's Announcements</u></p> <p>The Chairman drew attention to the written announcements included in the agenda pack.</p> <p>This included information about the commissioning strategy for 11-19 year olds. In September 2011 Wiltshire Council approved the commissioning strategy for 11-19 year olds. Youth Advisory Groups would be set up in all community areas by June 2012 to help plan and shape local services.</p> <p>Wiltshire Council was continuing to put in place the new help to live at home service. The main priority was managing the movement of customers from existing providers to the new providers with as little disruption as possible.</p> <p>The Localism Act received Royal Assent on 15 November 2011. Please find further information in the agenda pack.</p> <p>The Chairman underlined there was a service to the community award. The Wiltshire Police Authority were seeking nominations for someone who has given exceptional service in the Neighbourhood Policing team. Nominations should be made by post or email to the Wiltshire Police Authority offices at: Golden House, London Road, Devizes, Wiltshire, SN10 2DN or 01380 734 022.</p> <p>Regarding the Air Quality Management Strategy in Calne, the Environmental Protection team was in the process of gathering air quality data together for a</p>

	<p>report which would be submitted to DEFRA in April.</p> <p>A six week consultation period on the Wiltshire Core Strategy would commence on 20 February until 2 April 2012. The core strategy incorporated a strategy for each community area which identified specific development sites where appropriate and specific considerations in each area. All the consultation documents were available on the Council's website and at the main Wiltshire Council offices. Comments could be submitted online via the Wiltshire Council website or in writing.</p> <p>A final round of consultation on the Aggregate Minerals Site Allocations Development Plan Document would run from 30 January to 12 March 2012. The Chairman explained the only site remaining in the document in the Calne community area was land near Compton Bassett. Wiltshire Council encouraged anyone wishing to view and comment on the consultation documents to use the website. The documents could also be viewed at the main Wiltshire Council offices and local libraries.</p>
6.	<p><u>Youth Budget</u></p> <p>Six groups of young people presented their projects and requested funding from the area board. Information was also provided on tables about each project. Councillor Marshall explained the area board had a budget of £4285 to fund a number of youth projects. He asked those at the meeting to vote on the projects using the electronic handsets provided. They were asked two questions regarding each project; whether it would attract young people who didn't often access mainstream activities and opportunities and whether the project offered lasting benefits to those involved or provided more opportunities for others in the future. Councillor Marshall made clear there may be the potential to fund projects not successful under this item at a later stage in the meeting from the general area board budget, depending on how Community Area Grants were awarded.</p> <p><b><u>Decision</u></b>  <b>The area board would delegate the decision as to which of the young people's projects received funding to the room. The decisions below were made on this basis.</b></p> <p><b><u>Decision</u></b>  <b>The Forum were awarded £860 towards an 'Out on the Water' project.</b></p> <p><b><u>Decision</u></b>  <b>Calne Young Carers were awarded £780 towards a 'Calne Past and Present' project.</b></p> <p><b><u>Decision</u></b>  <b>The Grove were awarded £970 towards a 'Camping Adventure'.</b></p>

	<p><b><u>Decision</u></b>  <b>Extended Schools Partnership were awarded £870 towards a ‘Splash Band’ project.</b></p> <p><b><u>Decision</u></b>  <b>The Forum were not awarded £1300 towards a ‘Careers Advice Book’ project from the youth budget.</b></p> <p><b><u>Decision</u></b>  <b>The Extended Schools Partnership were not awarded £815 towards a ‘Wicked Wall’ from the youth budget.</b></p>
7.	<p><b><u>Partner Updates</u></b></p> <p>a. The written update from Wiltshire Police was noted. Wiltshire Police Authority would conclude their business at the end of the year. A fuller report would be provided at the next area board meeting. A question was raised about a weight restriction at Lyneham Banks. When the area board had researched the issue, it had been stated that Wiltshire Police were unwilling to introduce a weight restriction, because this was the only alternative route in the event the M4 motorway was closed between junctions 16 and 17, as often seemed to be the case. Sergeant Connor would respond directly to the interested individual. This route had to be used by HGVs as the only alternative (the B4042 via Malmesbury/Wootton Bassett) had a height restriction.</p> <p>b. The written update from Wiltshire Fire and Rescue Service was noted. The area board would send a message to Group Manager Mike Franklin, who usually attended area board meetings, to get well soon.</p> <p>c. The written update from NHS Wiltshire was noted.</p> <p>d. The written update from the Calne Community Area Partnership was noted. Trevor Jenkins introduced himself as the new Chairman of the Partnership, having taken over from David Evans. A lot of work had been undertaken on the Partnership website and this would show information about new courses that were soon to be launched and the many events happening at the community hub. The annual cycle event would take place on the 23 June alongside a Green Day for Calne and ongoing initiatives to support Fairtrade in the town. Volunteers were being sought for the Partnership’s education and culture sub-groups.</p> <p>e. Calne Community Area Young People’s Issues Group (CAYPIG) – the group reported they were exploring the shift from a CAYPIG to becoming a Youth Advisory Group.</p> <p>f. Town and Parish Councils – Ed Jones from Focus on Five stated he was waiting for lights to be installed at Studley Crossroads. He emphasised that Chinese lanterns were a concern in rural areas and urged people to think</p>

	<p>about the hurt they could cause to animals when they land in the countryside.</p> <p>David Evans noted that Cherhill Parish Council was organising celebration events for the Queen's Diamond Jubilee and when the Olympic Torch was in the local area. Mud on the road at Yatesbury was being addressed.</p> <p>Calne Town Council raised an issue about road safety on Abberd Way where four injuries had occurred over recent years with young children running out of lanes. Christine Crisp informed the meeting that the area board had already received a formal issues sheet related to this and the highways working group was looking into the issue and improvements could perhaps be made as a part of the work being undertaken by the Sandpit Road (S106) working group. A site visit had been arranged with a principal engineer from Wiltshire Council. The speed of traffic near the bridleway would be highlighted at the visit by Councillor Trotman.</p>
8.	<p><u>Calne Campus Working Proposal</u></p> <p>Trevor Jenkins and Nick Cooper from the Calne campus working group gave a presentation about the proposal for a campus in Calne. This included the following main points:</p> <ul style="list-style-type: none"> <li>• A campus was a physical site or multiple sites which could be existing or new</li> <li>• The purpose of a campus was the delivery of public services to meet the needs of local people</li> <li>• A key element was the input of local people in deciding how and where services would be delivered</li> <li>• A working group had been established to find out what the community wanted</li> <li>• A 1<sup>st</sup> phase of consultation had taken place in August 2011, with online and paper surveys completed (this found 78% support for the campus initiative)</li> <li>• A proposal was developed from the consultation based on a multi-site campus in Calne</li> <li>• A 2<sup>nd</sup> phase of consultation had taken place in November/December 2011 to seek feedback on the proposal (this found 90% of respondents in favour of the proposal).</li> </ul> <p>The presentation was followed by an opportunity to ask questions. Youth provision had been identified as the fourth priority for the community. Will Kay, Youth Development Co-ordinator was reassured that he would be spoken to later in the consultation period, to help find out more about what local young people would like to have provided.</p>

9.

Area Board Funding

Consideration was given to the seven applications made to the Community Area Grants Scheme.

Decision

Friends of Abberd Brook were awarded £1,414 towards an interpretation board at Doctors Pond, conditional upon the balance of funding being in place and relevant permissions granted.

Reason

*The application meets the 2011/12 grant criteria and the group had made excellent progress in the local area.*

Decision

Wiltshire and Berkshire Canal Trust were awarded £596 to improve the footpath along the Marden Valley.

Reason

*The application meets the 2011/12 grant criteria and it would encourage a sense of community cohesion, pride and well being.*

Decision

Calne Environmental Network were awarded £720 towards creating and promoting a new community group to address environmental issues in the Calne community area.

Reason

*The application meets the 2011/12 grant criteria and the group would take a broad focus on environmental issues and engage with the community to promote awareness and action.*

Decision

Derry Hill and Studley Safety Watch Association were awarded £1,104 towards traffic calming white gates at Studley/Derry Hill.

Reason

*The application meets the 2011/12 grant criteria and the project represented the local community taking action on an issue that had been a high priority for the Calne Area Board highways working group (CATG).*

Decision

Calne Area Transport were awarded £4,800 towards the design and production of a series of boards promoting safer cycling/pedestrian routes in the town, conditional upon the balance of funding being in place, relevant permissions granted and the design being approved by the CATG working group.

	<p><b><u>Reason</u></b>  <i>The application meets the 2011/12 grant criteria and information on the boards could reflect findings of the longer term Calne Area Transport project to identify safer routes in the town.</i></p> <p><b><u>Decision</u></b>  <b>Calne Partnership of Churches</b> were not awarded £3,000 towards the hire of a blue bus for youth drop in sessions.</p> <p><b><u>Reason</u></b>  <i>The application did not meet the 2011/12 grant criteria, as it represented provision of running costs for an existing project.</i></p> <p><b><u>Decision</u></b>  <b>Calne Area Young People’s Issues Group</b> (skate sub group) were awarded £5,000 towards the extension and renovation of the Calne skate bowl.</p> <p><b><u>Reason</u></b>  <i>The application meets the 2011/12 grant criteria and the issue of the skate bowl was identified as significant for the area by the CAYPIG in 2010.</i></p> <p><b><u>Decision</u></b>  <b>The area board</b> awarded £11,970 towards a project from the highways working group to extend the footpath on the Lake View side of the A4 in Quemerford.</p> <p>Councillor Marshall set out that as the area board had £1,441.83 remaining in the general budget and £805 from the youth budget, the monies would be put together to fund the youth projects that were unsuccessful earlier in the meeting.</p> <p><b><u>Decision</u></b>  <b>The Forum</b> were awarded £1300 towards a ‘Careers Advice Book’ project.</p> <p><b><u>Decision</u></b>  <b>The Extended Schools Partnership</b> were awarded £815 towards a ‘Wicked Wall’.</p>
10.	<p><b><u>Your Local Issues</u></b></p> <p>Councillors provided an update on community issues and progress on Calne Area Board working groups.</p> <p>a. Councillor Marshall thanked the area board for the funding towards the skate board park. He commented it was good to hear how the young people were raising money for the project.</p> <p>b. Councillor Crisp gave a report about the Calne Community Area Transport Group (CATG). The group last met on 18 January 2012. Sites at East</p>

	<p>Tytherton and Quemerford had been referred for assessment in the community speedwatch scheme and the group had been looking at sites for a speed indicator device (SID). The Hilmarton refuge scheme had a provisional start date of 12 March and should take approximately 2 weeks to complete. The lighting scheme at Studley Crossroads was due to commence on 20 February and to take 10 days. With regards to remaining issues, in spite of the signage at Curzon Street/Wood Street, air quality did not seem to have improved at the site. The group agreed to review work that had already been undertaken, in particular on making it a single way route. Councillor Crisp also asked the area board to consider a report relating to SID deployment in the community area and it was agreed that 7 sites should be put forward for assessment and inclusion in the deployment rota.</p> <p><b><u>Decision</u></b>  <b>Future decisions made regarding recommendations from the Calne Community Area Transport Group would be delegated to the Community Area Manager, in consultation with the Community Area Transport Group.</b></p> <p>c. Councillor Trotman gave an update about the Sandpits Lane (section 106) working group. This was a new innovation to get local people involved in how developer contributions would be spent in the community. The last meeting of the working group had been held on 24 January. A site meeting was planned with Stephen Hind, Principal Engineer, later in February. The next stage would be for a design to be drawn up and costed. Councillor Hill underlined his concern that a zebra crossing should be installed before houses were constructed. Councillor Trotman confirmed this matter had been included in discussions so far. A written update would be provided by the section 106 working group for the next area board meeting.</p>
11.	<p><b><u>Evaluation and Close</u></b></p> <p>The Chairman thanked all those who came to the meeting. In light of the time, the room chose not to complete an evaluation of the evening. The next area board meeting would be held at 7.00 pm on Tuesday 10 April at Lansdowne Hall in Derry Hill, with refreshments available from 6.30 pm.</p>





## Your say on local waste and recycling sites

Following the success of the new improved waste and recycling collection services in Wiltshire, some of the other recycling facilities in Wiltshire are being used less and therefore we are looking to save around £250,000 by making changes to these services. This will help the council to spend more on priority services, such as those for vulnerable adults and children, and roads.

We are now looking for your views on how you use your local recycling facilities and how these savings can be achieved.

Thanks to people in Wiltshire using their blue lidded bins we now recycle more than 700 tonnes of plastic bottles and cardboard every month.

### Household recycling centres – summer opening hours

Everyone in Wiltshire can now ask to have a free garden waste collection from the kerbside, making it easy to recycle garden waste from home. During recent summers the household recycling centres have been open until 7pm on Wednesday and Thursday evenings, to help residents to recycle their garden waste in particular. As the new free kerbside collection service will soon be in place it is proposed household recycling centres will go back to normal summer opening, until 5pm, 7 days per week. (This change will affect all sites except Salisbury household recycling centre, Churchfields, where current opening hours are different and will not alter.)



### Local mini recycling sites

Paper, glass, cans, clothes, foil, plastic bottles and cardboard are now collected direct from every home in Wiltshire and the use of local mini recycling sites has significantly reduced. In particular we expect sites with plastic bottle and cardboard bins to be used much less, due to the popular new blue lidded bin collections. We therefore propose to remove some local mini recycling sites, whilst keeping a good network for you to use in addition to kerbside collections.

We are proposing to review local mini recycling sites on the following grounds-

- How much recycling is collected from each site
- Distance from the nearest alternative recycling sites
- Number of homes the site is serving
- Ease of use (eg access and parking)
- Ease of emptying the bins
- Condition of the site
- Amount of flytipping or non-residents' waste dumped.

### Have your say

If you would like to comment on these proposals, please complete an online questionnaire at [www.wiltshire.gov.uk/consultations](http://www.wiltshire.gov.uk/consultations) or call 0300 456 0102 for a paper copy. **Please reply by 28 May 2012.**



## **Review of Polling Districts and Polling Places– Consultation Briefing Note**

Section 16 of the Electoral Administration Act 2006 introduced the requirement for councils to review polling districts and polling places within their Parliamentary constituencies, and to review them again at least every four years.

The 2009 County of Wiltshire Order not only set up the new unitary divisions, but also established new town wards in most urban areas which are co-terminous with the divisions. This will allow us to rationalise a number of polling districts, as they will take effect for the 2013 elections. Until then, the council has had to have polling districts which recognise the boundaries of both the older town wards, and the unitary divisions, resulting in a number of small registers where they overlap.

In May 2013, there will be elections to directly elect members to the New Forest National Park Authority. The National Park affects three Wiltshire parishes, but its boundaries do not coincide completely with existing parish or polling district boundaries. This review proposes to create new polling districts in those parishes, in readiness for those elections.

The Council will need to approve a scheme of polling districts and polling places for the (Acting) Returning Officer (ARO) to then consider in order to select polling stations. The ARO is therefore obliged to be consulted during the review, and any representations must be published within 30 days of receipt.

We are seeking your views on Wiltshire Council's existing polling districts and polling places. As part of the review there is also an opportunity to comment on the polling stations.

The Council has also prepared two documents which refer to proposed changes to polling stations and polling districts. These two documents have been amalgamated and sorted into Area Boards for ease of reference and relevance. A list of existing polling stations has also been compiled which has been separated into Area Board area for ease of reference. These are attached to this briefing note and are also available on the dedicated webpage (please see link below). We would seek your views on any of the points highlighted on this document or any other issues that you feel need to be addressed.

Due to the size of the Council's area and the number of polling districts and polling stations, it is not practical to send detailed hard copy maps to all consultees. However, officers have used the Geographical Information System to plot all existing polling districts, together with the position of known polling stations which is available to use on the dedicated webpage.

For more information on the parameters to use, please go to the webpage and click on the Review of Polling Districts – Briefing Note.

Submissions must be received in writing by Friday 25 May 2012. Forms can be completed online or download from the Council's website at:

<http://www.wiltshire.gov.uk/council/elections/electionsreviewpollingdistrictsplaces.htm>

Submissions will then be reviewed with a final scheme being presented to Full Council for approval in July 2012.



<b>Electorate as 1</b>					
<b>December</b>					
<b>Polling Districts</b>	<b>Polling Place</b>	<b>2011</b>	<b>Polling Station</b>	<b>Area Board</b>	<b>Parliamentary Constituency</b>
ML1,MN3, MN4	Calne	1,790	Army Cadet Hut, Bryans Close Road, Calne, Wilts	<b>Calne</b>	North Wiltshire
NM1	Compton Bassett	187	Benson Hall, Compton Bassett, Calne, Wilts	<b>Calne</b>	North Wiltshire
MF1	Bremhill	343	Bremhill Village Hall, Bremhill, Calne, Wiltshire	<b>Calne</b>	North Wiltshire
ML2,MO1	Calne	1,432	Calne Corn Exchange, Town Hall, The Strand, Calne, Wiltshire	<b>Calne</b>	North Wiltshire
MT1,OB1	Calne Without	455	Charles Willis Hall, Church Road, Heddington, Calne, Wilts	<b>Calne</b>	North Wiltshire
MQ1,MY1	Cherhill	1,062	Cherhill Village Hall, The Street, Cherhill, Calne, Wilts	<b>Calne</b>	North Wiltshire
MP1	Calne	1,817	Coleman's Farm Learning, And Community Centre, Association, 15 & 16 Angell Close, Calne, Wilts	<b>Calne</b>	North Wiltshire
MG1,NA1	Bremhill	248	East Tytherton Village Hall, The Green, East Tytherton, Chippenham, Wilts	<b>Calne</b>	North Wiltshire
MM1,MS2	Calne	1,589	Fynamore Primary School, School Road, Calne, Wilts	<b>Calne</b>	North Wiltshire

<b>Electorate as 1 December</b>					
<b>Polling Districts</b>	<b>Polling Place</b>	<b>2011</b>	<b>Polling Station</b>	<b>Area Board</b>	<b>Parliamentary Constituency</b>
OC1	Hilmarton	615	Hilmarton Chapel, Church Lane, Hilmarton, Calne, Wilts	<b>Calne</b>	North Wiltshire
MO2, MP2	Calne	2,547	Holy Trinity C of E School, Quemerford, Calne	<b>Calne</b>	North Wiltshire
MZ1	Cherhill	125	John Stewart Hall, Yatesbury, Calne, Wilts	<b>Calne</b>	North Wiltshire
MS1,MS3, MU1,MV1, NB1	Calne Without	1,458	Lansdowne Hall, Petty Lane, Derry Hill, Calne, Wiltshire	<b>Calne</b>	North Wiltshire
ML3,MM2, MN1,MN2, MN3	Calne	3,410	North Star Club, Bremhill View, Calne	<b>Calne</b>	North Wiltshire
MH1	Bremhill	196	Reading Room Cottage, Foxham, Chippenham, Wilts	<b>Calne</b>	North Wiltshire



## Particular Points for Review

### Calne Area Board

This information has been extracted from the 2 master documents that are published on the website - Polling Places and Polling Stations for Review and Proposed Changes to Polling Districts so that it is relevant for each Area Board.

#### **Polling districts where the polling station is situated outside of the parish or Unitary Division**

This has to be recorded to denote that the polling place is outside of the polling district or Unitary Division which is permissible within the Regulations.

Polling District	Parish/Unitary Division	Polling Station	Polling Place	Constituency
MS2	Calne Chilvester and Abberd	Fynamore Primary School, School Road, Calne, Wilts	Calne (Calne North Unitary Division)	North Wiltshire
MM1	Calne Chilvester and Abberd	Fynamore Primary School, School Road, Calne, Wilts	Calne (Calne North Unitary Division)	North Wiltshire
MT1	Calne Rural	Charles Willis Hall, Church Road, Heddington, Calne, Wilts	Heddington	North Wiltshire
MQ1	Calne South and Cherhill	Cherhill Village Hall, The Street, Cherhill, Calne, Wilts	Cherhill	North Wiltshire

#### **Changes to Polling Stations**

This is a list of polling stations that are no longer available for use

Unitary Division	Existing Polling Station	Polling District(s)	Reason	Proposal
NONE				

**This is a list of temporary polling stations used**

Unitary Division	Existing Polling Station	Polling District(s)	Reason	Proposal
NONE				

**Polling Districts to be merged**

Unitary Division	Polling District	Merge with
Calne Central	MO1	ML2
Calne Chilvester and Abberd	MS2	MM1
Calne Chilvester and Abberd	MN3	ML1
Calne Chilvester and Abberd	MN4	ML1
Calne North	MM2	MN1
Calne North	ML3	MN1
Calne North	MN2	MN1
Calne South and Cherhill	MO2	MP2

**Polling Districts to be split as electorate above 2500**

Unitary Division	Polling District	Electorate
Calne North	MN1	2,912

## Other proposals

Unitary Division	Polling District	Issue	Proposal
Calne Chilvester and A	MN4	2 separate areas with same polling district code.	This will be corrected when the polling districts are merged with ML1
Calne Rural	MQ1	Boundary Commission error	In consultation with Boundary Commission

Please note that this document represents particular points which the Council are aware of. However, submissions are welcome on any of these points or any other areas which have not been listed.



## Helping People To Live Safely In Their Own Homes

Following extensive consultation and considerable planning, the care and support service is now in place throughout the county provided by Leonard Cheshire, Aster Living, Enara Complete Care and Somerset Care.

This service is now available to over eight hundred Wiltshire residents and is already delivering some really good outcomes for people, some examples of which include:

- Mrs A, who was able to return home after a period in a care home.
- Mr S, able to manage without support following a period of intensive support from a Help to Live at Home provider.
- Mr P was able to return home from hospital, with an intensive support package from a Help to Live at Home provider rather than take the previously traditional route of a nursing home.
- Mr G was withdrawn and uncommunicative, with the implementation of a flexible care package from a Help to Live at Home provider, within two weeks Mr G started referring to his carers by name and holding short conversations. He has now requested to go shopping with a carer once a week, and is able to manage some personal care.

All services are available to everyone in Wiltshire, not just those eligible for support from the Council and contact details for each Help to Live at Home providers below:

### **Leonard Cheshire Disability**

North and east Wiltshire

Tel: 01225 781126

### **Aster Care Services**

East and south Wiltshire

Tel: 01380 829000

### **Somerset Care at Home**

West and north Wiltshire

Tel: 01225 792925

### **Enara Complete Care Services**

West Wiltshire

01225 791015

### **Wiltshire Medical Services**

Tel: 01249 454000

### **Medequip UK**

Tel: 01249 815052

## Further service improvements:

- ✓ The **Help to Live at Home telecare response and community equipment services** are being provided by Wiltshire Medical Services (WMS), Medequip UK and Aster Living. These services have already been implemented in West Wiltshire, as part of the Help to Live at Home pilot test and will be introduced across the county in April.

Medequip UK is now the provider for all community equipment aimed at assisting customers to remain independent in their own homes. Community equipment ranges from the more traditional aids such as chair raisers, continence products, hoists etc. to more specialist technology including pendant alarms, fall sensors and pressure relief mattresses.

With an aim to make equipment more accessible Medequip is working closely with the Independent Living Centre in Semington to equip a demonstration suite for customers to visit and will be opening a number of retail units across Wiltshire. In addition Medequip will implement a mobile demonstration and assessment unit, able to visit the whole of Wiltshire.

Telecare customers have specialist equipment in their homes which, in an emergency, triggers an alarm at the Wiltshire Medical Service call centre in Chippenham. This can be responded to in a number of ways; a conversation with the customer via the Telecare equipment, contacting a key holder, or a WMS responder visiting the customer.

A telecare service without the ability to visit customers has restrictions. When an alert is triggered, a standard call centre may be able to do little else, except call an ambulance and which can lead to an inappropriate hospital admission. The benefit of the new telecare response service is that it allows customers to receive the most appropriate response, when they need it.

- ✓ **Specialist financial advice** to people seeking assistance with paying for their care is now available.

Around 40 percent of individuals, who go into residential and nursing care in the county have to finance care themselves as they have savings and assets (including their home) worth more than £23,250. Unfortunately up to 25 percent of these individuals run out of funds, leaving little or no inheritance for loved ones. This may be avoidable in some cases.

Paying for care can be an expensive and open-ended commitment so the council would strongly recommend that customers seek specialist information and advice before making any commitments.

If a customer is currently in receipt of care it is still advisable to seek specialist information and advice as there may be options available to you to protect your interests.

To support people who pay for their own care, Wiltshire Council is working with two independent care fees specialists to help customers make informed choices about their long term care and specifically how they can fund it.

Both of these Specialists are accredited by SOLLA, (Society of Later Life Advisers) through the Later Life Accreditation Scheme:

Ashton Rowan  
Telephone: 01225 475359  
Email: [wilts@ashcourtrowan.com](mailto:wilts@ashcourtrowan.com)  
Web: [www.ashcourtrowan.com/financial-planning](http://www.ashcourtrowan.com/financial-planning)

Care Fee Investments Limited  
Telephone: 0845 077 5655  
Email: [wilts@carefeesinvestment.co.uk](mailto:wilts@carefeesinvestment.co.uk)  
Web: [www.carefeesinvestment.co.uk](http://www.carefeesinvestment.co.uk)

- ✓ The **Customer Reference Group** now has 40 members, 20 of whom have received training and are shortly to hold two coffee mornings for Help to Live at Home customers to hear their views on the service.
- ✓ A **dedicated customer helpline** has been set up for Help to Live at Home issues, this number is staffed 9am-5pm, Monday to Friday on 01225 712553.

## **Volunteers Update – Increasing the Numbers of People Volunteering in Council funded Youth Centres**

On 13 September 2011 Wiltshire Cabinet approved the Commissioning Strategy for 11 to 19 year olds. This included 7 broad priorities on:

- Employment and training
- Educational attainment
- (These were the top 2 commissioning priorities selected by young people)*
- Housing
- Transport for young people
- Involving young people
- Volunteering
- Improving Integrated Youth Services

Cabinet also approved a Wiltshire Youth Work Offer. The key features of the Youth Work Offer are:

- Open Access Youth Work
- Higher level targeted youth work support
- Better co-ordination of positive activities for young people
- Stronger partnerships
- Increased use of volunteers

An implementation group which includes councillor representatives has been meeting monthly since September 2011 to coordinate delivery of the Wiltshire Youth Work Offer from 1 April 2012. Good progress has been made to date and the Youth Services Implementation Group would like to invite Area Boards to consider this progress and support the following initiatives:

### **1. Increase use of volunteers**

A sub group of the Youth Services Implementation Group has been exploring ways of encouraging more local volunteers to get involved with youth work provided in Council funded youth centres. This links to the Council's overall partnership Volunteering Strategy and Action Plan.

The group has been working on the establishment of a joint process between the Council and the Voluntary and Community Sector for the registration and training of local volunteers to support youth based activities. A guidance pack is now being developed for all Youth Development Centres which sets out the best way to go about registering and training volunteers. Those who wish to volunteer will be able to claim reasonable expenses and develop their skills through appropriate training opportunities.

The group has noted the importance of attracting and encouraging local people within community areas to become involved in volunteering opportunities within their local Youth Development Centre. Consequently, the group would like to invite Area Boards to support this endeavour by supporting local youth centres to promote volunteering opportunities within each community area.

Details of voluntary roles with young people will be available from the Volunteer Centre and/or local Youth Development Centre from 1 April 2012.



## **2. Youth Advisory Groups**

Part of the Wiltshire Youth Work Offer includes the formation of Youth Advisory Groups in all community areas. Pilots are currently taking place in Malmesbury, Melksham, Southern Wiltshire and Salisbury. The groups will play a key role in improving the co-ordination of positive activities for young people in local areas.

The groups will be set up in each local area, linked to Area Boards. Each Youth Advisory Group will be chaired by a young person under 25 and over 50% of members will be under 19 years of age. Advisory groups will plan and shape local services, making sure local young people know what is available and encouraging partnerships which avoid overlap and fill gaps. Mechanisms will be established to ensure knowledge and ideas are shared between Youth Advisory Groups.

Youth Advisory Groups will have commenced in 20 community areas across Wiltshire by the end of October 2012. Learning from the pilots will be used to inform the development of groups in other areas.

The Youth Services Implementation Group would like to invite Area Boards to support these developments and to establish strong and meaningful links with Youth Advisory Groups in each community area.

## **3. Income Generation**

As part of the Wiltshire Youth Work Offer the Youth Development Service has been set an income generation target of forty five thousand pounds. This will be raised through a combination of subscriptions, fund raising and seeking sponsorship.

A revised staffing funding formula has been used to calculate an income generation target for each community area. The targets will be put into place from 1<sup>st</sup> April 2012.

The Youth Services Implementation Group would like to invite Area Boards to support local Youth Development Centres in their endeavours to attract and raise income. For example, supporting local fundraising events and attracting local business sponsorship.

*The Youth Services Implementation Group invites feedback from Area Boards on any of the initiatives highlighted above.*

*Any comments, queries or questions should be sent to [james.fortune@wiltshire.gov.uk](mailto:james.fortune@wiltshire.gov.uk) by 31<sup>st</sup> July 2012.*

James Fortune  
Lead Commissioner 11-19  
01225 713341

# Crime and Community Safety Briefing Paper

## Calne Community Area Board

### Tuesday 10th April 2012



#### 1. Neighbourhood Policing Team

**Sgt:** Philip Connor

##### **Town Centre Team**

Beat Manager – PC Hans Monahan

PCSO – Shelley Gray,

PCSO Barry Mussard,

PCSO Gaynor Bennett, \*

PCSO Nicole Yates

PCSO Mark COOK \*

##### **Rural Team**

Beat Manager – PC Alan Blake

PCSO – Sarah Hardwidge (currently on maternity)

#### 2. NPTs - Current Priorities & Consultation Opportunities:

Up-to-date details about Neighbourhood Policing Teams including team membership, current priorities and forthcoming community consultation events can be found on the Wiltshire Police Website.

□ Visit the new and improved website at: [www.wiltshire.police.uk](http://www.wiltshire.police.uk)

#### 3. Police Authority Representative: Chris Caswill

Please contact via Wiltshire Police Authority Tel. 01380 734022 or

<http://www.wiltshire-pa.gov.uk/feedback.asp>

#### 4. Performance and Other Local Issues:

Currently Calne NPT are working with partner agencies which include Anti Social Behavioural (ASB) officers, housing officers, Wiltshire and the Town Council to tackle the rise in ASB caused by large groups gathering in The Pippin. This message has been backed with a police warning letter. To date a total of thirty letters have been sent to the parents/guardians of the youths involved, informing them of their child's behaviour. These letters have resulted in four ASB referrals for the continued behaviour carried on after receiving a initial warning letter. The referral will be discussed at a panel meeting where all partner agencies who work within the Wiltshire council and police will attend including Youth Offending teams. I would like to acknowledge the valuable support received from the local CCTV operators who provide the police with a large amount of evidence to support our ongoing issue. Retailers and local residents have noted to the police that they have seen a drop in the activity from these youths.

Blues and Zuz which is a disco held at the John Bentley School for youths aged eleven to sixteen has proved a success again In February one hundred and fifty seven children attended a

valentines theme disco where each child received a free lindt chocolate bear, the top prizes given away in a raffle were two scooters.

On 2<sup>nd</sup> March, plain clothes officers set up an operation in relation to the rise in shed and garage burglaries over the past months in Calne. While they were on patrol in the Stokes Croft area at 5.30am an officer noted a male wearing all black walking down the street. When the officer alerted the person of who they were the male began to run, the foot chase was ended by another officer who had heard the shouts. The male was detained and identified as a Jordan Sweetlove, he was arrested and charged for going equipped. The North Wiltshire Magistrate courts have placed the male on court bail to remain indoors on tag between the hours of 2000hrs till 0800hrs, until his hearing in May.

During the same week nine uniformed officers (from NPT and Specials) along with a passive drug dog, patrolled the town centre going into the local licensed premises and other late night establishments. The operation proved successful although the dog did not detect anyone with drugs on them. However, it did show an interest in a male who had told police that he had smoked a cannabis roll up prior that night. The operation received a good response from the locals in the establishments as well as the staff. The intention was to show that operations such as this one, organised by the Community Beat Manager for Calne Town will stop anyone who is considering dealing with drugs.

NPT have been working hard over the past few months to gain statements and evidence to support an Anti Social Behavioural Order application re/ a local male who has caused the town, local residents, and store owners much distress through his behaviour and continued shop lifting, The male was earlier arrested and charged with a post conviction ASBO. The ASBO application hearing will be on the 4<sup>th</sup> April 2012 at the North Wiltshire Magistrates Court.

Calne	Crime				Detections	
	March 2010 - February 2011	March 2011 - February 2012	Volume Change	% Change	March 2010 - February 2011	March 2011 - February 2012
Violence Against the Person	195	172	-23	-12%	49%	49%
Dwelling Burglary	59	56	-3	-5%	20%	13%
Criminal Damage	210	209	-1	0%	11%	12%
Non Dwelling Burglary	135	146	11	8%	4%	3%
Theft from Motor Vehicle	65	78	13	20%	3%	5%
Theft of Motor Vehicle	13	17	4	31%	15%	6%
Total Crime	1030	994	-36	-3%	23%	22%
Total ASB	828	955	127	15%		
Wiltshire Police are compared against a group of 8 most similar forces. Wiltshire Police have performed in line with peers and better than average for All Crime and better than peers for Violent Crime in the previous 12 month period (Mar 2011 - Feb 2012)						
*Total Crime comprises all Crime Groupings listed above and also includes Theft and Handling, Fraud and Forgery, Robbery and Sexual Offences						
** Detections include both Sanction Detections and Local Resolution						

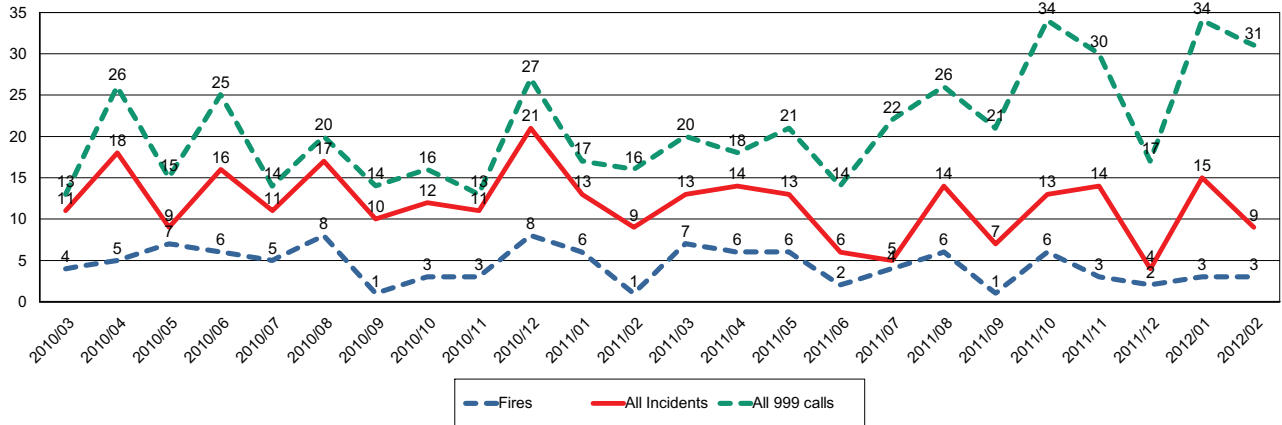
Martin Schorah – Sector Inspector for Chippenham, Calne & Corsham.



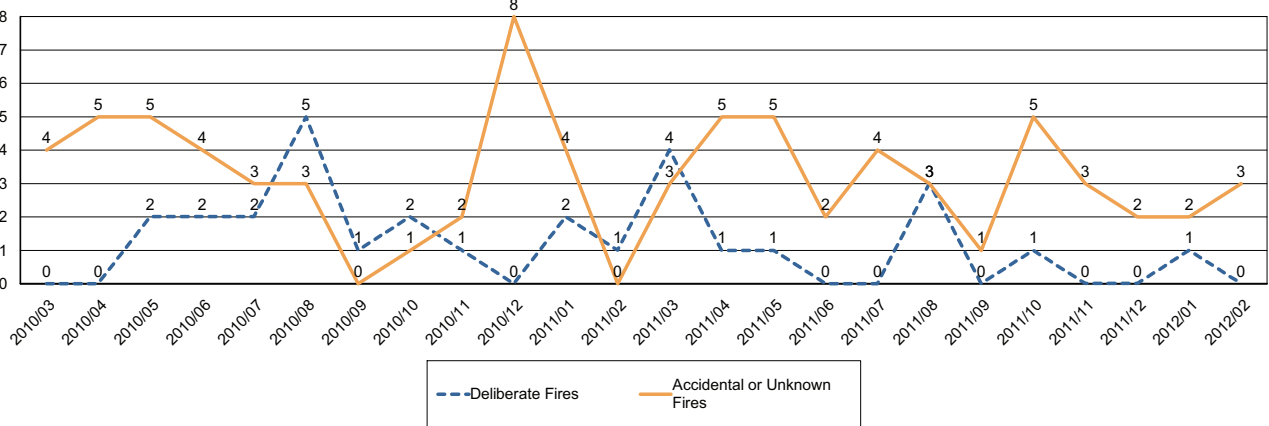
## Report for Calne Area Board

The following is an update of Fire and Rescue Service activity up to and including February. It has been prepared using the latest information and is subject to change.

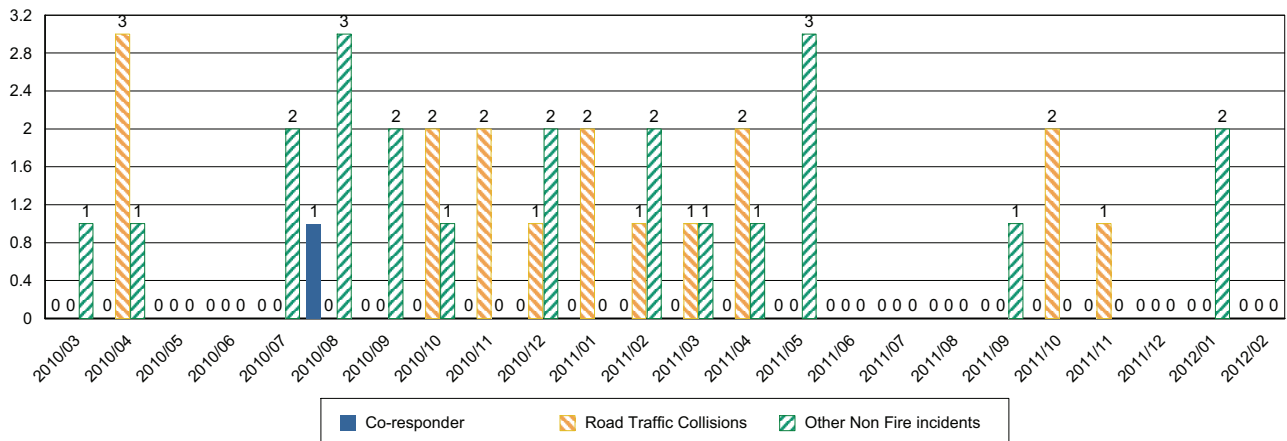
### Incidents and Calls



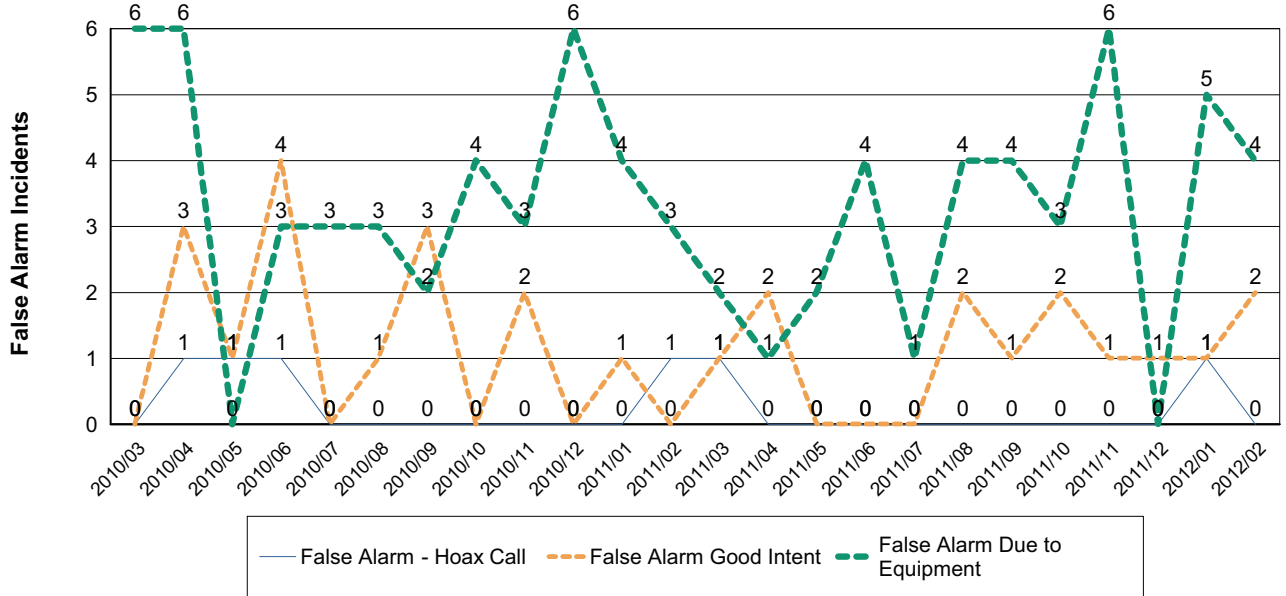
### Fires by Cause



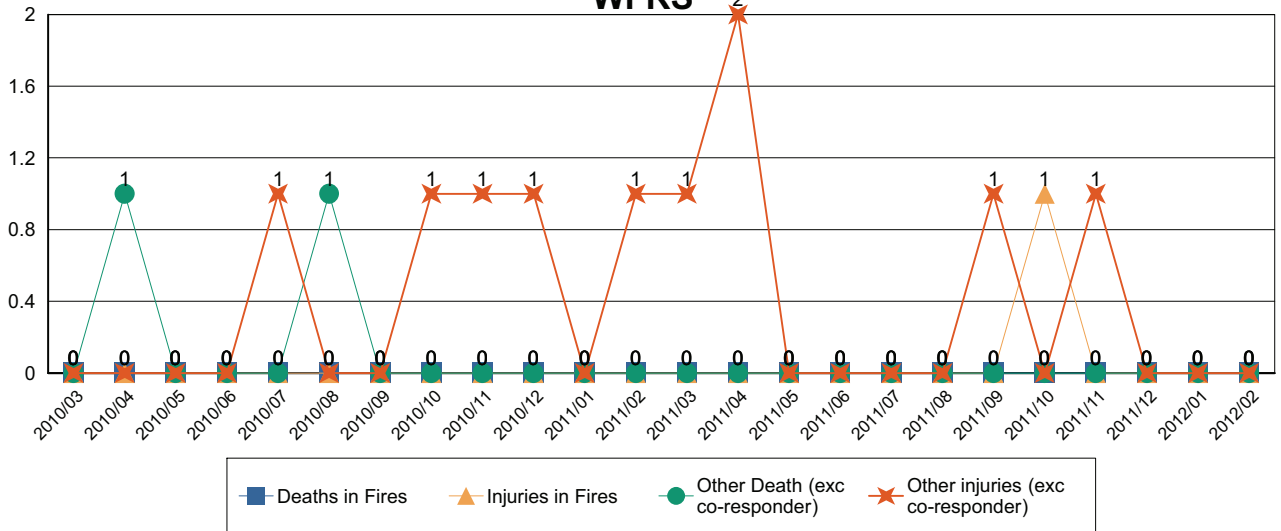
### Non-Fire incidents attended by WFRS



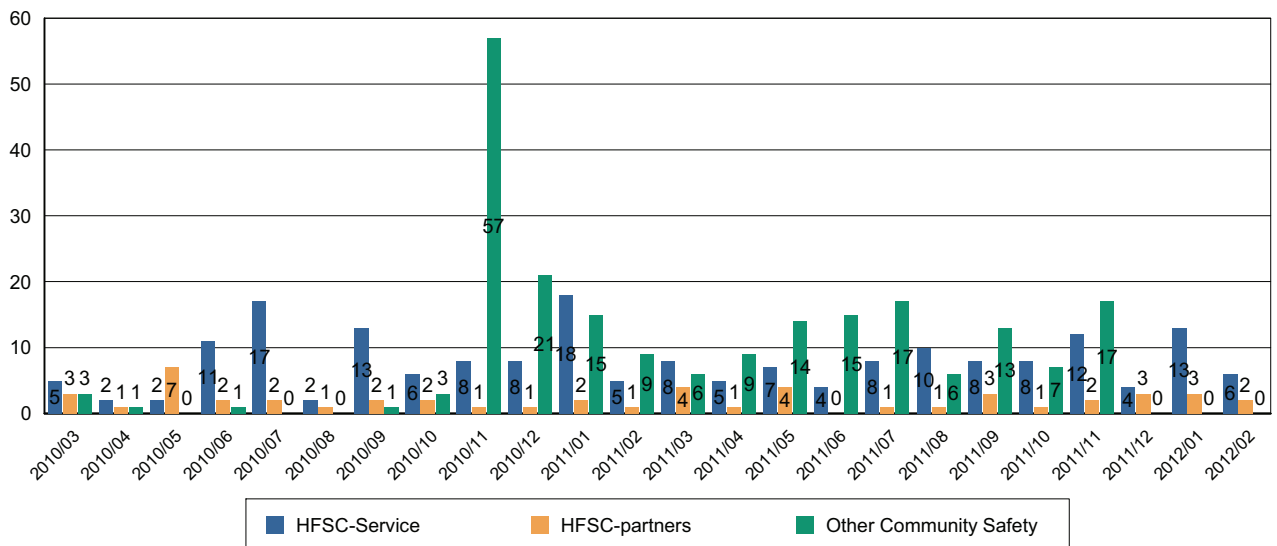
### Number of False Alarm Incidents



### Death & Injuries in incidents attended by WFRS



### Home Fire Safety Checks and other domestic safety



Comments and Interventions overleaf

## Community Area Board – Partners Update

### Wiltshire Fire & Rescue Service

#### The Need for Change

The risks that Wiltshire Fire and Rescue Service face are changing, from a reduction in our budget, through the increased housing within Wiltshire to the type of incidents that we respond to on a daily basis.

Our goal is to meet these challenges and provide an improved service to you in the most effective and efficient way possible.

#### Areas of Change

To achieve this goal, we have reviewed how we provide the service today and how we should be providing that service to you in the future. We have come up with five proposals that will expand our ability to respond to incidents, enhance the knowledge and skills of our staff and reduces the overall cost of the Service to you, the taxpayer.

This briefing note sets out the proposals but we also need your help.

This is your service and we would like your opinion on what we plan to do.

#### Wiltshire Fire & Rescue Service Proposals

We are proposing the following options:

1. To alter the way we employ firefighters on the Retained Duty System (on-call staff) to guarantee availability and to provide a sustainable system.
2. To alter the way we crew stations to relocate staff throughout the county to create communities of stations to manage increased risk presented by future developments.
3. To alter the shift times of operational staff to occur outside of incident peak hours.
4. To alter duty systems to provide enhanced cover (for example: Westlea will have an immediate response at night).
5. To relocate specialist vehicles to provide suitable and sustainable arrangements.

We would welcome your opinion on these changes and this can be done in a number of ways. You can register as a stakeholder and receive a survey to complete, you can view the consultation document and comment using the supplied e-mail address or you can view the proposals and complete the survey that will be provided at the meeting.

**Electronically:** [consultation@wiltsfire.gov.uk](mailto:consultation@wiltsfire.gov.uk)

**Telephone:** 01380731114

**Post:** Scott Taylor (Public Consultation Lead) Manor House, Potterne,  
Wiltshire SN10 5PP



## April update

### Summary Care Record – your emergency care summary

The NHS in England is introducing the Summary Care Record, which will be used by doctors and nurses in the event of unscheduled or emergency care. The record will contain information about any medicines you are taking, allergies you suffer from and any bad reactions to medicines you have had, to ensure those caring for you have enough information to treat you safely. It is already being used successfully in many parts of the country and will affect the whole of the patient population of Wiltshire. More information is below:

#### **People in Wiltshire will receive letters with information and a leaflet about the Summary Care Record from 16<sup>th</sup> April onwards.**

The Summary Care Record can be very useful to health staff – particularly if you are taken ill or have an accident in an area where you do not live. Healthcare staff will be able to check your information so that they know what will be the best way to treat you if, for instance, you are allergic to a particular medicine.

Healthcare staff who can see your Summary Care Record:

- Need to be directly involved in caring for you;
- Need to have a smartcard with a chip and passcode (like a bank card and PIN)
- Will only see the information they need to do their job and
- Will have their details recorded

By law, everyone working for the NHS, or on behalf of the NHS, must respect your confidentiality and keep all information about you secure – and more information about this is contained in the leaflet you will receive.

As a patient you have a choice:

- **Yes I would like a Summary Care Record** – you do not need to do anything when you receive your letter, and a Summary Care Record will be created for you. If you have an accident, or need some emergency or unscheduled healthcare, healthcare staff will ask your permission before they look at your record, except in certain circumstances (for example if you are unconscious).
- **No I do not want a Summary Care Record** – a freepost opt out form will be included with your letter. **This form should be completed, sealed and returned, or alternatively you can hand it into your GP practice.** Additional copies of the opt out form can be picked up from your GP practice or requested from the dedicated NHS Summary Care Record Information line on **0300 123 3020.**



If you feel you would like more information to help you decide, you can telephone the dedicated NHS Summary Care Record Information Line on **0300 123 3020** or visit the website at **[www.nhscarerecords.nhs.uk](http://www.nhscarerecords.nhs.uk)**, where you can find information in other formats and languages.

**You can choose not to have a Summary Care Record and you can change your mind at any time by informing your GP practice.**

If you are a parent or guardian of a child under 16 then you may wish to discuss this with them – they will automatically receive a Summary Care Record unless you opt them out.

Your Summary Care Record will be created over the next six months from receipt of your letter; if you choose not to have a Summary Care Record then you need to send the opt-out form back within 12 weeks from the date of your letter.

If you do nothing the NHS will assume that you are happy and create a Summary Care Record for you.

## NHS Continuing Healthcare

### Introduction of deadlines for requests for assessments of eligibility for cases during the period 2004-2012

On 15 March 2012, the Department of Health announced the introduction of deadlines for new cases which require assessment of eligibility for NHS Continuing Healthcare funding.

The deadlines apply to previously un-assessed periods of care, which occurred in the following time periods:

Period	Deadline
1 April 2004 – 30 September 2007	30 September 2012
1 October 2007 – 31 March 2011	30 September 2012
1 April 2011 – 31 March 2012	31 March 2013

If you think that this affects you or a family member, please contact the Continuing Healthcare Team at NHS Wiltshire for further information on how to notify the PCT of a request for assessment of eligibility. This notification should be given within the deadlines above. Some cases may be accepted after the dates outlined above if there are exceptional circumstances for doing so.

Contact the CHC team at NHS Wiltshire on **01380 733865** or **chcoffice@wiltshire.nhs.uk**



## **Air Quality Action Plan for Wiltshire- Summary (For all area boards with an Air Quality Management Area)**

### **Wiltshire’s Air Quality Action Plan**

Where an air quality management area (AQMA) has been declared the Council must produce an Action Plan detailing measures to improve air quality. Since the formation of Wiltshire Council we have been left the legacy of the District Councils Action Plans. These now need to be consolidated into one single plan as well as including actions for our more recently declared AQMAs.

### **Wiltshire’s Air Quality Strategy**

We have recently produced an air quality strategy for Wiltshire which details actions the Council will undertake to improve air quality. These actions will impact the whole of Wiltshire in working towards improving air quality and include action such as producing supplementary planning guidance with respect to air quality ensuring all new development is considered in a consistent manner. The Strategy can be viewed on the Council website:

<http://www.wiltshire.gov.uk/communityandliving/publicprotection/pollutionandnoise/airandwaterpollution/airquality/airqualityreportsandsummaries.htm>

### **Community Involvement**

The Council has produced what it feels are the ‘strategic’ actions, however one of the most important areas is the community input into the Action Plan. We want the community to effectively write their own action plan, agree it at area board level then submit to ourselves for inclusion into the Wiltshire Air Quality Action Plan which will ultimately be submitted to DEFRA.

Devizes Community Area Partnership (DCAP) and their traffic sub group have been very active in coming up with local solutions to improving air quality in the town. We would like to see their approach adopted across other area boards with air quality issues and let the community take some ownership of the problem.

### **Examples of innovative ideas**

Making it easier for people to walk by having overgrown hedges cut back from pavements
Providing more cycle racks in the centre of town
Looking at getting supermarkets to deliver goods that people have actually been into the store to buy. Eg. Iceland allow you to shop then have it delivered later. Particularly aimed at people who want to cycle and walk to shop but purchase of heavy goods prevents this
Joining up cycle ways
Promote the school walking bus – pay parents to take on the role?
Target school travel planning – how can it be made easier for children to walk, cycle, share lifts, use public transport? A school car share scheme
Look in detail at refuse collection routes and times of day. Some collections are on busy roads at peak times in the morning

ECO stars – promoting less fuel consumption on commercial vehicles

Insert electric charging points for cars

Encourage use of local suppliers to reduce 'freight' miles

Improve bus and cycle provisions

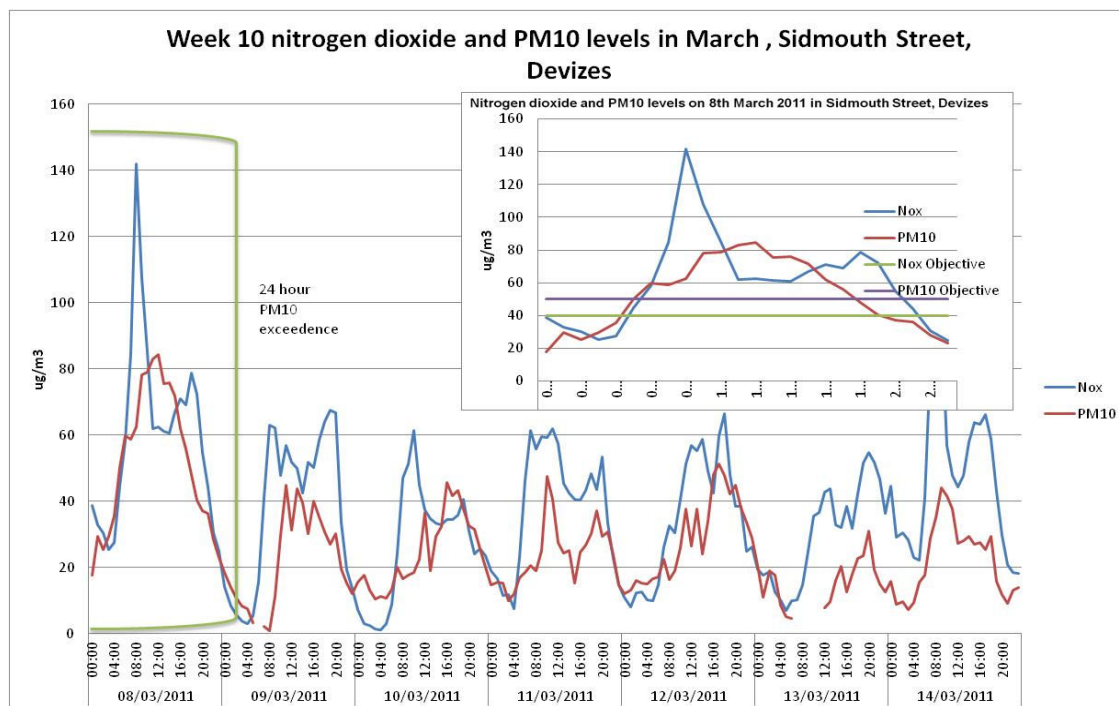
Undertake safe cycle training for adults and children

## Data

We monitor for nitrogen dioxide with diffusion tubes at around 100 locations around Wiltshire and have automatic monitoring sites in Bradford On Avon, Westbury (soon to be moved to Calne), Devizes and Salisbury monitoring for nitrogen dioxide and particulates.

We will be in a position to provide diffusion tube data for 2011 by mid March 2012 and automatic data by the end of February 2012. If you would like data to be sent to you after this time please contact Rachel Kent. (details below)

## Example of a graph from the Devizes automatic monitor



## Next Steps

Please could the area board consider if you have a sub group already in existence which could take on the issues surrounding air quality. If there are none can one be formed?

Once the relevant group is in place we would like to come along and facilitate a workshop on generating ideas such as those suggested in the table above to help with the writing of the community action plan.

The plan will need to have timescales as well as a basic cost benefit analysis. It may well include 'aspirational' actions as well as actions that can be worked on almost immediately. Some may be very costly and others may have very little cost associated.

### **Timescale**

March 2012	make initial contact with the area boards and see if relevant sub groups are in place
April – July 2012	facilitate workshops and work with groups in formulating the action plan
August 2012	have an agreed community action plan to be submitted to Wiltshire Council for inclusion in the Wiltshire Air Quality Action Plan
September – October 2012	Wiltshire Council to consult on the Action Plan
December 2012	have an agreed and accepted plan to submit to DEFRA

### **Further information**

Further information on air quality can be found on our website at:

<http://www.wiltshire.gov.uk/communityandliving/publicprotection/pollutionandnoise/airandwaterpollution/airquality.htm>

or by contacting Rachel Kent, Environmental Health Officer, Public Protection Services, Browfort, Bath Road, Devizes. Tel 01380 734888 or email [Rachel.kent@wiltshire.gov.uk](mailto:Rachel.kent@wiltshire.gov.uk)



<b>Report to</b>	<b>Calne Community Area Board</b>
<b>Date of Meeting</b>	<b>10<sup>th</sup> April 2012</b>
<b>Title of Report</b>	<b>Community Area Grants</b>
<b>Purpose of Report</b>	
<ul style="list-style-type: none"><li>To ask Councillors to consider 1 application seeking 2012/13 Community Area Grant Funding, and 1 Area Board/Councillor led initiative:</li></ul>	
<ol style="list-style-type: none"><li><b>1. Calne Extended Schools Partnership</b> - requesting £3,000 towards 'Calne Games' a range of events that will involve and encourage wider participation in Olympic and Paralympic values and will be open to all children who go to primary school in the Calne Community Area.  <i>Officers recommend that a grant of £3,000 is awarded, conditional upon the balance of funding being in place.</i></li></ol>	
<ol style="list-style-type: none"><li><b>2. Area Board Project – Wiltshire Diamond Jubilee Event</b> – requesting £800 towards providing a presence for the Calne Community Area at the Salisbury Diamond Jubilee event on May 1<sup>st</sup> 2012.  <i>Officers recommend that a grant of £800 is allocated to this Councillor initiative.</i></li></ol>	



## **1. Background**

- 1.1. Area Boards have authority to approve Area Grants under powers delegated to them by the Deputy Leader and Cabinet member for Community Services. Under the Scheme of Delegation Area Boards must adhere to the Area Board Grants Guidance for funding.
- 1.2. In accordance with the Scheme of Delegation, any decision of an Area Board that is contrary to the funding criteria and/or the officer's recommendation would need to demonstrate that the application in question has a wider community benefit, and give specific reasons for why this should justify an exception to the criteria.
- 1.3. The emphasis in the Coalition Government's Localism agenda supports the ethos of volunteering and community involvement. With this in mind Community Area Grants should be encouraged from and awarded to community and voluntary groups.
- 1.4. Area boards will not consider applications from town and parish councils for purposes that relate to their statutory duties or powers that should be funded from the local town/parish precept. However this does not preclude bids from town/parish councils, encouraging community projects that provide new opportunities for local people or those functions that are not the sole responsibility of the town/parish council.
- 1.5. In addition to Community Area Grants, Councillors can submit an Area Board Project which differs from Community Area Grants in that they do not require match funding. Area Board Projects should not be used to avoid complying with Community Area Grant criteria.
- 1.6. Area Board Projects are designed to enable the Area Board to address community issues or projects identified in the Community Plan/Local Agreement for Wiltshire. An application form is used and quotes for project work have to be provided in a similar manner to the Community Area Grant Scheme.
- 1.7. Officers are required to provide recommendations in their report, although the decision to support applications and to what level is made by Wiltshire Councillors on the Area Board.
- 1.8. Funding applications will be considered at every Area Board meeting.
- 1.9. All applicants are encouraged to contact Charities Information Bureau who work on behalf of Wiltshire Council to support community and voluntary groups, town and parish councils to seek funding for community projects and schemes from the Area Board and other local and national funding sources.
- 1.10. Paper copies of funding applications will no longer appear as part of the agenda in an attempt to reduce volume of paper used. However, the

application forms will be available on the Wiltshire Council web site and hard copies available upon request.

- 1.11. The 2012/2013 funding criteria and application forms are available on the council's website ([www.wiltshire.gov.uk/areaboards](http://www.wiltshire.gov.uk/areaboards)) or paper versions are available from the Community Area Manager.

<p><b>Background documents used in the preparation of this Report</b></p>	<ul style="list-style-type: none"> <li>• Community Area Grant Application Pack 2012/13</li> <li>• Calne Community Area Plan – 2004-14 (incl. 2006/2010 update)</li> <li>• Area Board Grants Guidance 2012/13</li> </ul>
---	---

## **2. Main Considerations**

- 2.1. Councillors will need to be satisfied that grants awarded in the 2012/13 year are made to projects that can realistically proceed within a year of the award being made.
- 2.2. The funding contained within this report forms the 1<sup>st</sup> of 6 rounds of funding for 2012/13.
- 2.3. Grants will be considered at each Area Board meeting in the Calne Community Area as follows:
- 12<sup>th</sup> June 2012 (deadline for applications: 30<sup>th</sup> April 2012)
  - 14<sup>th</sup> August 2012 (deadline for applications: 2<sup>nd</sup> July 2012)
  - 16<sup>th</sup> October 2012 (deadline for applications: 3<sup>rd</sup> Sept. 2012)
  - 11<sup>th</sup> December 2012 (deadline for applications: 29<sup>th</sup> Oct. 2012)
  - 5<sup>th</sup> February 2013 (deadline for applications: 21<sup>st</sup> Dec. 2012)

## **3. Environmental & Community Implications**

Community Area Grants will contribute to the continuance and/or improvement of cultural, social and community activity and wellbeing in the community area, the extent and specifics of which will be dependent upon the individual project.

## **4. Financial Implications**

- 4.1. Awards must fall within the Area Boards budget allocated to the Calne Community Area Board.
- 4.2. The total budget available to the Calne Community Area Board for 2012/13 is £42,852.00
- 4.3. If grants are awarded in line with officer recommendations, the Calne Community Area Board will have a balance of £39,052.00.

## 5. Legal Implications

5.1. There are no specific Legal implications related to this report.

## 6. HR Implications

6.1. There are no specific HR implications related to this report.

## 7. Equality and Inclusion Implications

7.1. Community Area Grants give all local community and voluntary groups, Town and Parish Councils an equal opportunity to receive funding towards community based projects and schemes.

7.2. Implications relating to individual grant applications are outlined within section 8 – “Officer Recommendations”.

## 8. Officer recommendations

Ref	Applicant	Project proposal	Funding requested
8.1	Calne Extended Schools Partnership	<b>‘Calne Games’</b>	£3000

8.1.1. **It is recommended that Calne Extended Schools Partnership is awarded a grant of £3000 towards a project that will provide all Calne Community Area primary school children with opportunities to focus on Olympic and Paralympic values.**

8.1.2. Officers are of the opinion that this application meets 2012/13 grants criteria.

8.1.3. This is a community project that will involve all primary schools in the Calne Community Area.

8.1.4. It will also reach out to families and the wider community and will promote the Olympic and Paralympic legacy.

8.1.5. The event is being arranged, in part to commemorate Calnes inclusion in the national torch relay for the 2012 London Olympics.

8.1.6. The Calne Games event will include a torch relay, which will spend a week at each Calne primary school encouraging a focus on positive ideas about engaging in sports, team working, culture, different cultural values and the local and global community and sharing these ideas with extended families and communities.

- 8.1.7. The torch will then arrive at John Bentley School for a culturally diverse opening ceremony which will signal the start of a week of events at the school and other facilities in and around the town. Each student will have the opportunity to be involved in one event and there will be opportunities for other community groups to be involved.
- 8.1.8. Each child will receive a 'school nation' t-shirt and will be presented with a medal at the closing ceremony to commemorate their participation and to symbolise the spirit of the games.
- 8.1.9. The main part of the project will take place between Monday 18<sup>th</sup> and Friday 22<sup>nd</sup> June.
- 8.1.10. The application links to Local Agreement for Wiltshire priorities through encouraging lifestyle changes that will have a positive impact on the health of participants and their families and young people's participation in positive activities.
- 8.1.11. The project also addresses the Calne Community Area Plan 2010 – 2014 to 'Encourage community events that create a sense of pride and well-being'.
- 8.1.12. If an award is made in line with officer recommendations it will represent approx 20% of the total project costs.
- 8.1.13. Other funding has been secured from LOCOG and corporate sponsors.
- 8.1.14. A decision not to fund this application will result in the event being delivered at a lesser level.

Ref	Applicant	Project proposal	Funding requested
8.2	Area Board Project	Wiltshire Diamond Jubilee Event	£800

- 8.2.1 It is recommended that £800 is allocated towards representing the Calne Community Area at the Salisbury Diamond Jubilee event on May 1<sup>st</sup> 2012.**
- 8.2.2 The Area Board has been asked to represent the Calne Community Area at a large Wiltshire Diamond Jubilee event to take place in Salisbury.
- 8.2.3 This is a major event in the Wiltshire Council calendar of events for 2012 and it is anticipated that a major member of the royal family will be in attendance.
- 8.2.4 The event will be themed around a medieval fair and each of Wiltshire's 18 area boards is expected to take a similar style 'jousting tent' in which to showcase its work.

- 8.2.5 The Area Board chairman is working closely with the Community Area Manager, the Town Council, the Heritage Centre and Library and local community groups to create a display that will reflect the Calne Community Area's rich heritage and vibrant community spirit.
- 8.2.6 While the Area Board feels that it should not fund local street parties, it is felt that the Community Area should be represented at this major event.
- 8.2.7 It is hoped that the event might promote good publicity for the area and might also promote the strong sense of community that exist and aspirations in the community plan concerning community cohesion and pride.
- 8.2.8 The Area Board will try to create displays using existing materials/artefacts and expertise.
- 8.2.9 This request for funding relates to the hire of the tent, display equipment, furniture and electricity supply on the day.
- 8.2.10 If this project is not awarded funding it is likely that the Calne Community Area will not be able to take part in the event.

<b>Appendices:</b>	<b>Appendix 1 Grant application – Calne Extended Schools Partnership</b> <b>Appendix 2 Area Board Project – Wiltshire Diamond Jubilee Event</b>
--------------------	--

No unpublished documents have been relied upon in the preparation of this report.

<b>Report Author</b>	Jane Vaughan, Community Area Manager Tel: 01249 706447 E-mail <a href="mailto:jane.vaughan@wiltshire.gov.uk">jane.vaughan@wiltshire.gov.uk</a>
----------------------	--